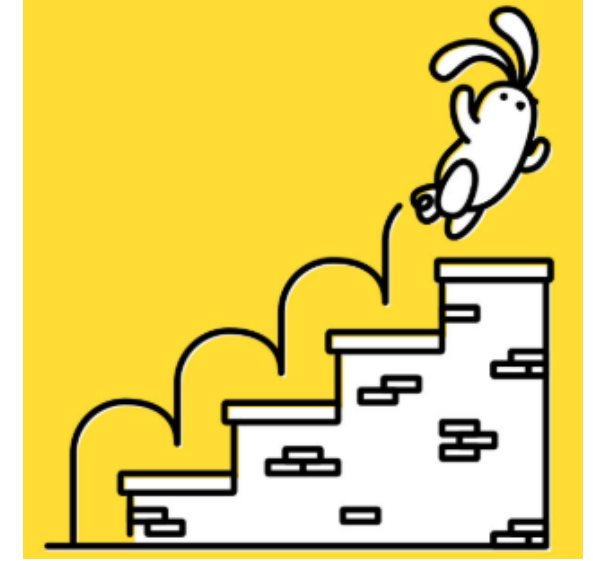


# Welcome to Webb Class



Be Curious  
Be Kind  
Be Responsible



# The School Day 8.30-3.00

The gates open at 8.30am and close at 8.40, arrivals after this time will be marked as late. It's important for your child to arrive as close to 8.30 as possible as learning starts straight away.

10.00-10.15 Break time

12.00-1.00 Lunchtime

3.00 Home time

# Weekly Timetable

	08:30-09:00	09:00 – 10:00	10:00 – 10:15	10:15 – 10:30	10:30 – 11:15	11:15 – 12:00	12:00 – 13:00	13:00 – 14:00	14:00 – 15:00	
<b>M</b>	Morning Task/ Reading	PE	Collective Worship	<b>Break Time</b>	Y3 Maths Y4 Fluency	Y4 Maths Y3 Fluency	<b>Lunch time</b>	Forest School		
<b>T</b>	Morning Task/ Reading	English	Guided Reading		Y3 Maths Y4 Fluency	Y4 Maths Y3 Fluency		Singing	Science	
<b>W</b>	Morning Task/ Reading	English	Guided Reading		Y3 Maths Y4 Fluency	Y4 Maths Y3 Fluency		PSHE	PE	
<b>Th</b>	Morning Task/ Reading	English	Guided Reading		Y3 Maths Y4 Fluency	Y4 Maths Y3 Fluency		Collective Worship	Art Computing DT	
<b>F</b>	Morning Task/ Reading	English	Guided Reading		Y3 Maths Y4 Fluency	Y4 Maths Y3 Fluency		Celebration Assembly	French	Music

# What will your child be learning next year?

A yearly overview will be emailed to parents along with this presentation which shows the plans for the year, they are subject to change.

This document will be on the school website from September and may be updated if throughout the year.

# Staff working in Webb

Mrs Hawes

Mrs Harris

Mrs Elliott

Miss Barnhill

Mrs Guy

Mr Samson & Mr Stead-PE

# Reading

In school we use Reading VIPERs, our first whole class text in the Spring Term is The Last Bear.

## Reading Vipers

Vocabulary  
Infer  
Predict  
Explain  
Retrieve  
Summarise



Whilst your child will be reading regularly in school it is important that they do so at home too. We all know how vital reading is in so many aspects of life. The better equipped they are by the time they leave primary school the easier things will be for them. It's important to read a range of fiction and non-fiction texts and whilst asking questions and discussing them is great, remember not to lose the enjoyment of what you are reading. And remember children (and adults!) are never too old to be read to. All reading at home should be recorded in reading diaries, children in Webb should be aiming to read at least 4 times a week at home for 20 minutes each time. If they do this (and remember to bring their diary in!) they are rewarded with a star for their charts.

# MathShed



Mental maths and mathematical fact knowledge are key components in the process of achieving maths fluency. The game aspect of MathShed ensures children are engaged and eager to practise critical maths skills. The low-stakes games, quizzes and reward systems ensure that children find learning maths fun. Children will be set assignments for homework and can use the games to work on their skills too even if not set as homework.

# Homework

Next year we are continuing to use the online platforms Spelling Shed and Math Shed. Children will be set a weekly activity for Maths and Spelling on Fridays that will consolidate the learning they have done in school that week. The platforms can be accessed on any device, including phones. Children will have their login details in their reading diaries. Feedback will be given to children verbally in school and all those that complete the task will be rewarded with 20 house points and a star for their charts. Log-in details will be stuck into reading diaries at the start of September.

# School Uniform

Please ensure that children have the correct school uniform and THAT IT IS ALL NAMED!!

We often have spare uniform in school, if you need bigger sizes etc please ask so we can pass it on when possible.

# Swimming

Webb will be swimming on Tuesday mornings for the Spring Term. Children need to bring a swimming costume, towel and goggles if needed. No talc or spray deodorants please.

# PE Days and Uniform

Children are expected to wear their PE kit, including appropriate footwear on Monday and Wednesday:

T-shirt in their house colour. These can be ordered from Amazon. The colours for each house are:

Copse: Sunflower      Grove: Royal Blue      Heath: Red      Spinney: Kelly Green

Plain dark blue or black shorts; and trainers (plimsolls are optional for indoor wear).

Tracksuit bottoms or leggings

Plain black or dark blue sweatshirts and tracksuits (with no logos) are permitted during outdoor PE when the weather is cold, but not for gym. A blue tracksuit with the school logo is available from School Trends.

# Outdoor Learning

We will be going to forest school on a Monday during the autumn and summer terms. We will be going whatever the weather, so please make sure your child has appropriate clothing and footwear.

We will not go to forest school during the spring term because of swimming.

# Assessment

- Adults in class are continually monitoring and assessing children using what they hear from the children and the work they produce. Children receive regular feedback both verbally and through marking in their books.
- End of block mini assessments are used in maths to help identify areas that children need to continue working on.
- Formal tests take place at the end of each term and will be reported to parents via a short report before Christmas and Easter. End of year reports will go home in July.

# Trips

- September - Whole school trip to Hill End
- December - Panto
- Class trip - TBC

# Making Contact

- Come and see me before or after school on the playground.
- Email the office with messages to pass onto staff.
- Call or email the office to arrange a phone call or meeting.
- Anything related to SEN can be emailed to [senco@tackley.oxon.sch.uk](mailto:senco@tackley.oxon.sch.uk) and will go directly to the SENDCo, Mrs Barnett.